

# CANCER CARE INITIATIVE OF THE YEAR

## WINNERS



## WESSEX CANCER ALLIANCE AND UNIVERSITY HOSPITAL SOUTHAMPTON FT

### WESFIT: PROMOTING SPREAD AND ADOPTION OF PERSONALISED PREHABILITATION CARE PLANS FOR PEOPLE WITH CANCER

WesFit is a completely innovative approach to delivering Personalised Prehabilitation Care Plans (PPCP) to people recently diagnosed with cancer. The impact of the service is best described by a patient himself; “I was at a very low point, having been ill for 18-months. I was offered the WesFit trial, where I received counselling and fitness sessions. My physical abilities and emotional outlook were transformed prior to surgery, meaning I was discharged day 4 and made a full recovery. I continue to be far more aware of my fitness, WesFit changed my life.” (Keith Cockerton).

#### JUDGES COMMENTS

The judges felt that this was an innovative and excellent programme with clear patient benefit and evidence of widespread dissemination both nationally and globally. There was a clear focus on improving outcomes, and excellent research outputs further enhanced the project. The judges were particularly impressed with the inclusion of nutrition into the programme, and the adaptation to a virtual programme during the pandemic.

# CANCER CARE INITIATIVE OF THE YEAR

## HIGHLY COMMENDED

### East Lancashire CCG and Blackburn with Darwen CCG

#### Pennine Lancashire Primary Care Cancer Team

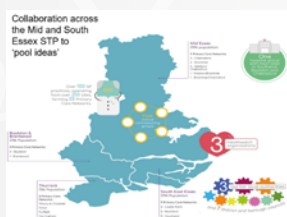
This cancer initiative is a long term sustainable primary care local incentive scheme for cancer. It has improved investment and education in primary care to transform services and improve patient care. It incorporates multiple projects over several years and is still ongoing. The incentives are outcome based and have or can be adopted by other organisations.

The Pennine Lancashire Cancer Team serves 540,000 patients. It includes EL & BwD CCGs and covers the same geographical footprint as East Lancashire Teaching Hospital Trust. The team comprises of Dr Neil Smith, clinical lead, Carol Hedley, commissioning manager and Angela Dunne, project manager.

#### JUDGES COMMENTS

The judges felt that this was high quality project which demonstrated great evidence of how a primary care group can work with their colleagues to improve the patient pathway for cancer, particularly in the area of screening and early two week wait referrals. The initiative has clearly improved allocation of the limited resource available to primary care colleagues, with patient centred outcomes and good evidence of financial value.

## FINALISTS



### Mid and South Essex CCGs Making colorectal cancer diagnosis FIT for the future

The Faecal Immunochemical Test (FIT) is a system-wide programme launched in mid and south Essex on 14 February 2019.

FIT is designed to improve patient experience, simplify diagnostic testing and capture early diagnosis of colorectal cancer. The test detects human blood in stools when it cannot be seen by the naked eye and is easy for patients to undertake. The FIT centre guarantees a 72-hour turnaround for negative results and direct same-day reporting back to GPs when positive.

The program supports national ambitions to improve cancer diagnosis, increase survival rates and enable patients to “livewell” with and beyond cancer.

### North Central London CCGs Quantitative Implementing Faecal Immunochemical Test (FIT)

Faecal Immunochemical Test (FIT) is a non-invasive, inexpensive and highly sensitive test detects hidden blood in a stool sample that could be suggestive of colorectal cancer (CRC). Led by a team of clinicians and commissioners the test was rolled out on 1st April in 220 practices of North Central London CCGs. The test is expected to deliver the following key benefits:

- Early (stages 1 and 2) detection and diagnoses of colorectal cancer after clinical presentation
- Better patient experience of care compared to colonoscopies
- More efficient use of limited endoscopy capacity across NCL which will deliver financial savings

# CANCER CARE INITIATIVE OF THE YEAR

## FINALISTS

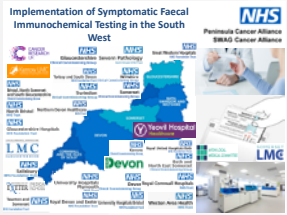


### **Northern Devon Healthcare Trust Acute Oncology Service**

The establishment of the Nurse Led Acute Oncology Service (AOS) at Northern Devon Healthcare Trust in 2015 ensured the availability of dedicated staff to care for the acutely unwell cancer patients in North Devon.

The AOS scope of practice covers patients who present with complications from their systemic anti-cancer treatments (SACT), complications from their disease or a new presentation of a cancer as an inpatient.

The service started with two part time specialist nurses but has been such a success it now has an Acute Oncology Nurse Consultant, five specialist nurses, a trainee assistant practitioner and full time administrative support.



### **South West Cancer Alliances Implementation of Symptomatic Faecal Immunochemical Testing in the South West**

In December 2017, the South West Cancer Alliances embarked on an ambitious project together, to provide access to FIT for over 600 General

Practices, serving a population of approximately 4.5 million across Cornwall, Devon, Somerset, Wiltshire, Avon, and Gloucestershire.

The programme was led by the SW Cancer Alliances (Peninsula and SWAG) working in partnership with 7 CCGs, 14 Trusts, GP Cancer Leads, CR-UK, Exeter Pathology Service, Severn Pathology Service and the DISCOVERY Team at the University of Exeter.



### **Tameside and Glossop Integrated Care FT, Pennine Care FT and Macmillan Cancer Support Creating a psychological therapy service for people living with cancer**

“This project is about improving access to psychological support and

talking therapies for people affected by cancer; promoting self-management and coping skills, reducing depression, anxiety and pain.

Working with existing community mental health services, this service offers psychological support for people, and their family members, affected by cancer through a specialist pathway. ‘The emotional support service for people affected by cancer’.

Tameside and Glossop ICFT serves a population of approximately 250,000 people living in the surrounding area. From this population, there are approximately 1645 new cancer diagnosis per year, with 8792 people living with, and beyond, cancer.

### **The Royal Hallamshire Hospital, Sheffield Teaching Hospitals FT DIEP Flap multidisciplinary surgery team, empowering women with breast cancer**

Breast cancer is a devastating diagnosis, where many women are required to have a mastectomy, with approximately 23,000 mastectomies undertaken each year on the NHS. Yet only 21% of women go on to have a breast reconstruction, with concerns that this number is too small and future funding for breast reconstruction for many women is being threatened across England. Yet we are two professional women who have survived breast cancer and have been empowered by having the DIEP breast reconstruction procedure, which has resulted in a shorter hospital stay, good clinical outcomes and we are feeling like ourselves again!

### **University Hospitals of Leicester Trust FIT for symptomatic**

This project was set up between primary and secondary care in the Leicester, Leicestershire, and Rutland (LLR) region which serves a population of one million and involved the primary care cancer lead, trust cancer lead, radiology and colorectal surgical lead.

In February 2018 the two week wait pathway was modified so that patients aged 60 and above with a change in bowel habit had a FIT test to stratify whether a straight to test (STT) investigation with a CT Colon was indicated.